

[HOW-TO GUIDE: How to install Mazda Toolbox? For Windows](#)

[HOW-TO GUIDE: How to install Mazda Toolbox? For OSX \(Mac\)](#)

[HOW-TO GUIDE: How to start using Mazda Toolbox? For Windows](#)

[HOW-TO GUIDE: How to start using Mazda Toolbox? For OSX \(Mac\)](#)

[HOW-TO GUIDE: How to identify and register your Infotainment System with Mazda Toolbox?](#)

[HOW-TO GUIDE: How to get my free map update in Mazda Toolbox? For Windows](#)

[HOW-TO GUIDE: How to get my free map update in Mazda Toolbox? For OSX \(Mac\)](#)


[HOW-TO GUIDE: How to make or restore a backup of the navigation system? For Windows](#)

[HOW-TO GUIDE: How to make or restore a backup of the navigation system? For OSX \(Mac\)](#)

HOW-TO GUIDE: How to install Mazda Toolbox? For Windows

Before downloading the installer from the [Downloads](#) page, please make sure that your PC meets [minimum technical requirements](#) (operating system, enough free space on your local hard disk).

Installation of Mazda Toolbox is quick and easy. After downloading the installer file, simply double-click the file to start the installation.



DOWNLOADS

Mazda Toolbox is an application that enables you to see all available updates, download the necessary files from the internet and upload updates and new content to your infotainment system. It can also be used to create and restore backups.

Mazda Toolbox
3.18.5

Supported platforms:

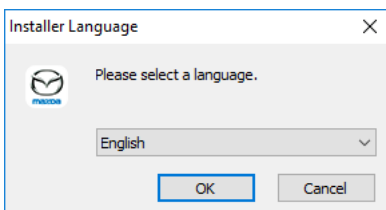
- Windows 7
- Windows 8
- Windows 10
- OSX 10.8 (or later)

Please note that Toolbox requires a minimum display resolution of 1024*768 and 10 Gb free space on your hard drive.

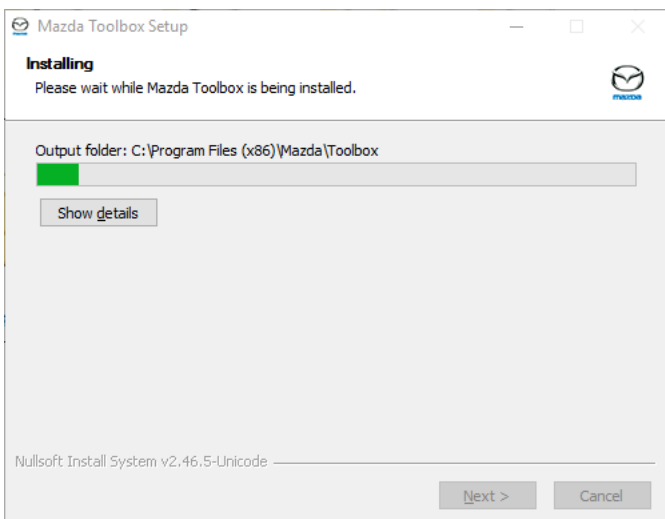
[Download for Windows](#) [Download for OS X](#)

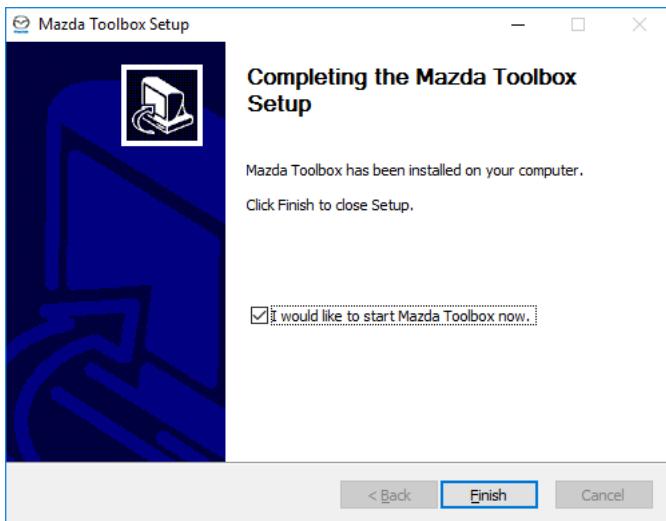
MAZDA TOOLBOX
NAVIEXTRAS

First you need to select the language of the Installation Wizard.



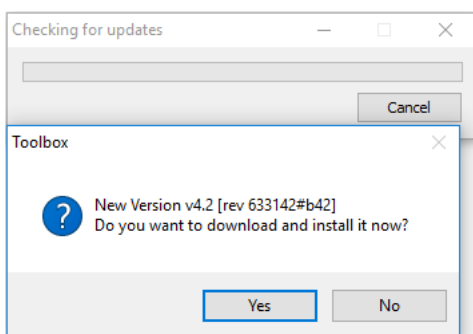
During the installation process follow the instructions on the screen and click Next:





If you checked the "I would like to start Mazda Toolbox now." option, Mazda Toolbox will start automatically after installation.

Toolbox has an AutoUpdate feature, which prompts you to upgrade it at every startup if there is a newer version available. If you choose to upgrade, you will go through the same installation procedure again as described above. You must have administrator privileges on your computer to be able to update the software. If you are notified about an update without the possibility of performing it, please contact your network administrator.

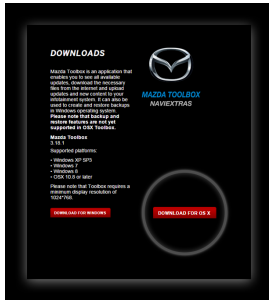


For advanced users or network administrators, it is also possible to download Mazda Toolbox and install it silently from the command line. To do that, type 'Mazda-Toolbox-inst.exe /S'.

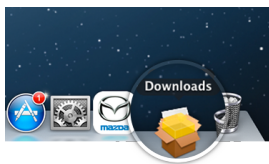
HOW-TO GUIDE: How to install Mazda Toolbox? For OSX (Mac)

Before downloading the installer from the [Downloads](#) page, please make sure that your PC meets [minimum technical requirements](#) (operating system, enough free space on your local hard disk).

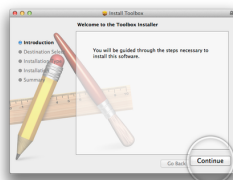
1. If your computer meets the requirements, click on the “Download for OSX” button.



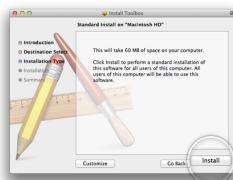
2. You will find the downloaded installer file in the “Downloads” folder. Simply click on it to start the installation process.



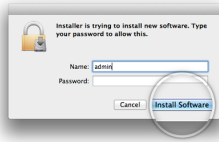
3. Click on “Continue”...



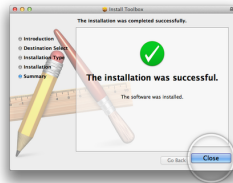
4. ...and click on “Install”



5. You will be required to type in your user name and password. When it is done, click on “Install Software”.

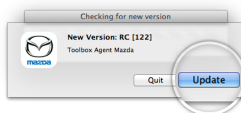


6. When the installation is successfully finished, close the window.



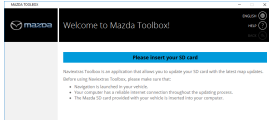
7. To start OSX Mazda Toolbox click on the “Mazda Toolbox” icon in the “Applications” folder or start it from the Launchpad.

Every time you start the OSX Mazda Toolbox, it will automatically check for updates. If a newer version is available, it will be offered automatically. We recommend you to always update to the latest version.



HOW-TO GUIDE: How to start using Mazda Toolbox? For Windows

This Guide explains the very first steps of using Toolbox: how to connect your Infotainment System to your PC and how to log in with your username and password. After Mazda Toolbox has been started, you can see a welcome screen that informs you that there is currently no SD card connected to the computer.

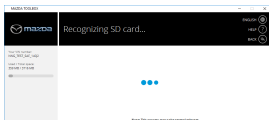


At this point, please connect the infotainment system's SD card to your PC. Please also make sure that

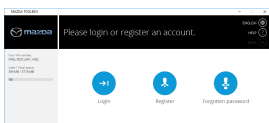
- your PC is connected to the internet,
- the Navigation had been already launched in your vehicle, and that
- your SD card has enough free space for the updates you would like to install. You will see the amount of available free space on the left side of the screen, once Toolbox has recognized the card.

Connecting the SD card

Please insert your SD card to the SD card-reader slot of your computer. When the SD card has been successfully connected, Mazda Toolbox shows a temporary screen to let you know it is in the process of recognizing the card. This can take several minutes.

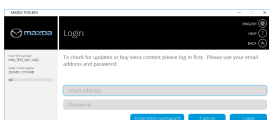


Once Mazda Toolbox has recognized the SD card, you will be prompted to log in if you already have a registered user account, or, alternatively, to register a new user account. You also have the possibility to reset your password, in case you already have a registered account but you do not remember the corresponding password.



Login

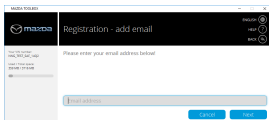
In order to log in, please provide your email address and your password, then click on **Login**. If the entered data is correct, you can access the Home screen of Mazda Toolbox.



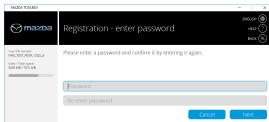
Register

If you would like to register a new user account, please click on the **Register** button. First, you will be prompted to enter an email address that will be linked to your account. Please make sure to provide a valid email address, as it will be necessary in case you have

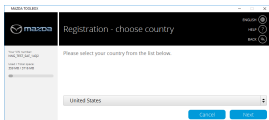
forgotten your password and you want to reset it.



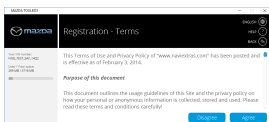
After entering the email address and clicking on **Next**, you will be prompted to enter a password, then re-enter it in the following field in order to confirm it.



Then, please click **Next** to proceed to the following step, where you can choose your country of residence. After selecting your country, again, click **Next** to proceed.



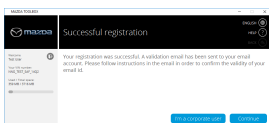
On the following screen, you will see the Terms and Conditions. Please read the information displayed on this page carefully, then click **Agree** to proceed.



On the following screen, you can subscribe to the newsletter to receive notifications about updates, special offers and other announcements. You can tick the checkbox to subscribe, or leave it unticked if you do not wish to subscribe. Once you have made your choice, click **Next** to proceed.



The following screen informs you about your successful registration. By clicking on **Continue**, you will get to the Home screen, which is the main menu of Mazda Toolbox.



*Note that if you are eligible for free updates, at this point, the Mazda Toolbox will automatically display the available updates for you, and you have the possibility to install them right away by clicking on the **Install** button.*

Home screen

After you have successfully registered a new account and logged in, you will see the Mazda Toolbox home screen.

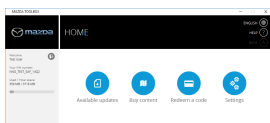
On the Home screen, you have four possibilities.

Clicking on the **Available updates** button shows you the updates that are available for your infotainment system.

The **Buy content** button enables you to buy additional map updates or connected services for your infotainment system.

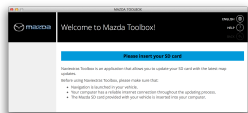
With the **Redeem a code** button, you can redeem a scratch code that enables you to download the latest contents for your infotainment system.

In the **Settings** menu, you can see and edit details of your user account, and you can manage, backup and restore the contents of your infotainment system.



HOW-TO GUIDE: How to start using Mazda Toolbox? For OSX (Mac)

This Guide explains the very first steps of using Toolbox: how to connect your Infotainment System to your Mac and how to log in with your username and password. After Mazda Toolbox has been started, you can see a welcome screen that informs you that there is currently no SD card connected to the computer.

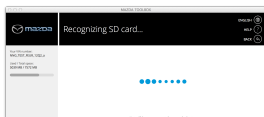


At this point, please connect the infotainment system's SD card to your Mac. Please also make sure that

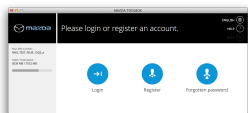
- your Mac is connected to the internet,
- the Navigation had been already launched in your vehicle, and that
- your SD card has enough free space for the updates you would like to install. You will see the amount of available free space on the left side of the screen, once Toolbox has recognized the card.

Connecting the SD card

Please insert your SD card to the SD card-reader slot of your computer. When the SD card has been successfully connected, Mazda Toolbox shows a temporary screen to let you know it is in the process of recognizing the card. This can take several minutes.

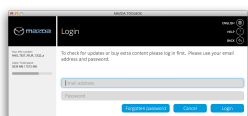


Once Mazda Toolbox has recognized the SD card, you will be prompted to log in if you already have a registered user account, or, alternatively, to register a new user account. You also have the possibility to reset your password, in case you already have a registered account but you do not remember the corresponding password.



Login

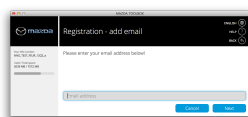
In order to log in, please provide your email address and your password, then click on **Login**. If the entered data is correct, you can access the Home screen of Mazda Toolbox.



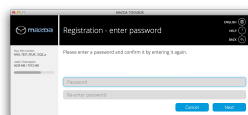
Register

If you would like to register a new user account, please click on the **Register** button. First, you will be prompted to enter an email address that will be linked to your account.

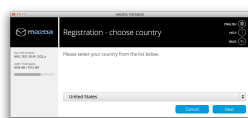
Please make sure to provide a valid email address, as it will be necessary in case you have forgotten your password and you want to reset it.



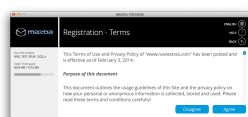
After entering the email address and clicking on **Next**, you will be prompted to enter a password, then re-enter it in the following field in order to confirm it.



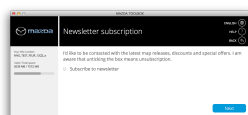
Then, please click **Next** to proceed to the following step, where you can choose your country of residence. After selecting your country, again, click **Next** to proceed.



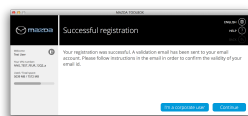
On the following screen, you will see the Terms and Conditions. Please read the information displayed on this page carefully, then click **Agree** to proceed.



On the following screen, you can subscribe to the newsletter to receive notifications about updates, special offers and other announcements. You can tick the checkbox to subscribe, or leave it unticked if you do not wish to subscribe. Once you have made your choice, click **Next** to proceed.



The following screen informs you about your successful registration. By clicking on **Continue**, you will get to the Home screen, which is the main menu of Mazda Toolbox.



*Note that if you are eligible for free updates, at this point, the Mazda Toolbox will automatically display the available updates for you, and you have the possibility to install them right away by clicking on the **Install** button.*

Home screen

After you have successfully registered a new account and logged in, you will see the Mazda Toolbox home screen.

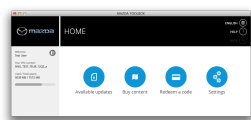
On the Home screen, you have four possibilities.

Clicking on the **Available updates** button shows you the updates that are available for your infotainment system.

The **Buy content** button enables you to buy additional map updates or connected services for your infotainment system.

With the **Redeem a code** button, you can redeem a scratch code that enables you to download the latest contents for your infotainment system.

In the **Settings** menu, you can see and edit details of your user account, and you can manage, backup and restore the contents of your infotainment system.



HOW-TO GUIDE: How to identify and register your Infotainment System with Mazda Toolbox?

This Guide is really short, because you have nothing to do, Toolbox will automatically identify the system and register it to your Mazda-na.Naviextras.com user profile.

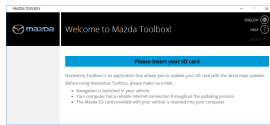
If you have followed the instructions of the "How to start using Mazda Toolbox?" Guide, and successfully connected your SD card and then logged in, then your system is already identified and registered into your Mazda-na.Naviextras.com user profile.

If you previously added your system type on Mazda-na.Naviextras.com site to your user profile, it is now overwritten by the automatic registration of Mazda Toolbox.

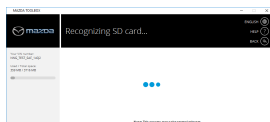
HOW-TO GUIDE: How to get my free map update in Mazda Toolbox? For Windows

You can get your free map update easily and start using it in your car immediately.

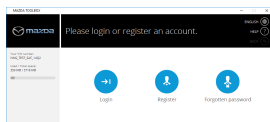
1. Remove the SD card from the SD slot in your vehicle and insert it into your PC.



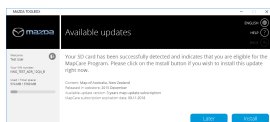
2. Toolbox will recognize your connected SD card automatically. Please note that this process may take several minutes.



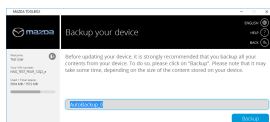
3. Once your SD card has been recognized, you can **log in** with your existing user account, or **register** a new account, if you do not yet have one.



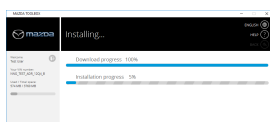
4. After successfully logging in, if there are free map updates available, you will be automatically offered to download them. If you would like to start the installation, click on the **Install** button.



5. Before installing the free update, it is strongly recommended that you backup the contents of your device, therefore Toolbox offers you the possibility to do so. Please choose a name so that you can identify the backup later, then click on **Backup** to create it. **Note that this process can take several minutes.**



6. When the backup has been created, please wait until the files for the free update are downloaded and are transferred to your SD card.



7. When the installation is done, you can exit the Toolbox with the **Exit** button, or return to the main menu with the **Home** button.



8. Finally, remove your SD card and insert it into the SD card slot in your vehicle. No further action is needed. As you start your navigation system, it will use the updated contents found on the SD card.

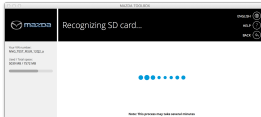
HOW-TO GUIDE: How to get my free map update in Mazda Toolbox? For OSX (Mac)

You can get your free map update easily and start using it in your car immediately.

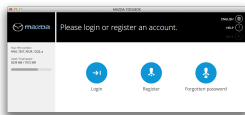
1. Remove the SD card from the SD slot in your vehicle and insert it into your Mac.



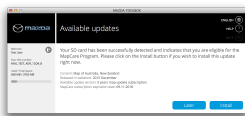
2. Toolbox will recognize your connected SD card automatically. Please note that this process may take several minutes.



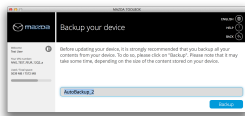
3. Once your SD card has been recognized, you can **log in** with your existing user account, or **register** a new account, if you do not yet have one.



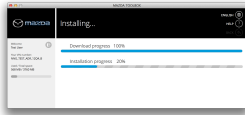
4. After successfully logging in, if there are free map updates available, you will be automatically offered to download them. If you would like to start the installation, click on the **Install** button.



5. Before installing the free update, it is strongly recommended that you backup the contents of your device, therefore Toolbox offers you the possibility to do so. Please choose a name so that you can identify the backup later, then click on **Backup** to create it. **Note that this process can take several minutes.**



6. When the backup has been created, please wait until the files for the free update are downloaded and are transferred to your SD card.



7. When the installation is done, you can exit the Toolbox with the **Exit** button, or return to the main menu with the **Home** button.



8. Finally, remove your SD card and insert it into the SD card slot in your vehicle. No further action is needed. As you start your navigation system, it will use the updated contents found on the SD card.

HOW-TO GUIDE: How to make or restore a backup of the navigation system? For Windows

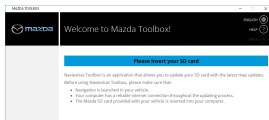
From time to time, it is useful to make a backup in order to create a backup, please follow the instructions described below. Backup of the contents of your navigation system to avoid losing all or some of your data in case of a hardware error or accidental data loss. This guide explains how to make a backup of your navigation system and how to restore a backup if it becomes necessary.

It is suggested to make a backup in at least the following cases:

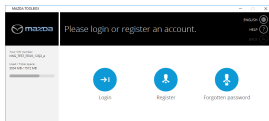
- right after you acquire your system;
- before using Mazda Toolbox to update your navigation software and its content;
- after updating your system.

In order to create a backup, please follow the instructions described below.

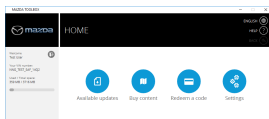
1. As a first step, please **start Mazda Toolbox**.
2. Once Toolbox is started, please **insert your infotainment system's SD card** into the card reader slot of your computer. The Mazda Toolbox will recognize the SD card.



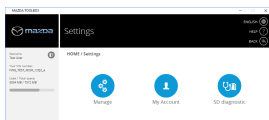
3. Once the SD card has been recognized by Mazda Toolbox, please **log in** with your existing user account, or register a new user account.



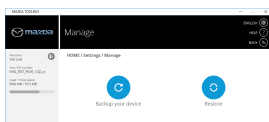
4. Once logged in, please click on the **>Settings** button on the Home screen.



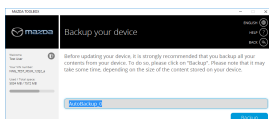
5. In the Settings menu, please click on the **Manage** button.



6. In the Manage menu, please click on the **Backup your device** button.



7. Enter a name for your backup, so that you will be able to identify it later on.



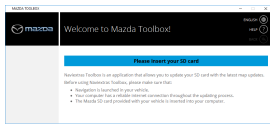
8. Please wait until Mazda Toolbox is creating the backup. This can take several minutes. After the backup is finished successfully, click on the **Home** button to return to the main

menu of Mazda Toolbox.

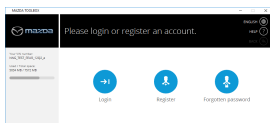
In order to restore a backup that was created previously, please follow the instructions described below.

1. Start Mazda Toolbox.

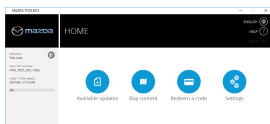
2. Once Toolbox is started, please **insert your infotainment system's SD card** into the card reader slot of your computer. The Mazda Toolbox will recognize the SD card.



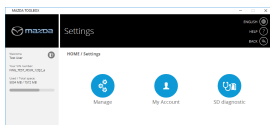
3. Once the SD card has been recognized by Mazda Toolbox, please **log in** with your existing user account, or register a new user account.



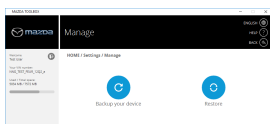
4. On the Home screen, please click on the **Settings** button.



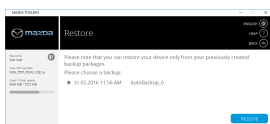
5. In the Settings menu, please click on the **Manage** button.



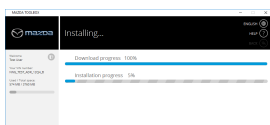
6. In the Manage menu, click on the **Restore** button.



7. Choose a backup from the list, and click on **Restore**. Note that you can restore your device only if you have previously created a backup.



8. Please wait until the download and install process is finished. This can take several minutes.



9. When the restore process is finished, click on **Home** to return to the main menu.

HOW-TO GUIDE: How to make or restore a backup of the navigation system? For OSX (Mac)

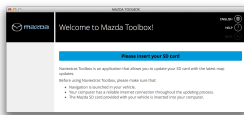
From time to time, it is useful to make a **bn** order to create a backup, please follow the instructions described below.ackup of the contents of your navigation system to avoid losing all or some of your data in case of a hardware error or accidental data loss. This guide explains how to make a backup of your navigation system and how to restore a backup if it becomes necessary.

It is suggested to make a backup in at least the following cases:

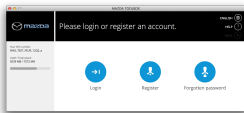
- right after you acquire your system;
- before using Mazda Toolbox to update your navigation software and its content;
- after updating your system.

In order to create a backup, please follow the instructions described below.

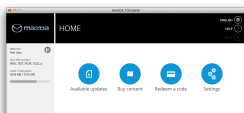
1. As a first step, please **start Mazda Toolbox**, either by clicking on the “Mazda Toolbox” icon in the “Applications” folder, or by starting it from the Launchpad.
2. Once Toolbox is started, please **insert your infotainment system’s SD card** into the card reader slot of your computer. The Mazda Toolbox will recognize the SD card.



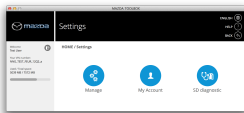
3. Once the SD card has been recognized by Mazda Toolbox, please **log in** with your existing user account, or register a new user account.



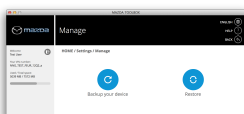
4. Once logged in, please click on the **>Settings** button on the Home screen.



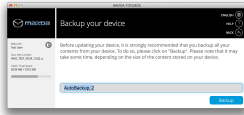
5. In the Settings menu, please click on the **Manage** button.



6. In the Manage menu, please click on the **Backup your device** button.



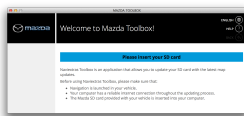
7. Enter a name for your backup, so that you will be able to identify it later on.



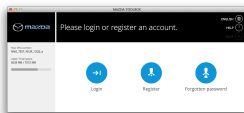
8. Please wait until Mazda Toolbox is creating the backup. This can take several minutes. After the backup is finished successfully, click on the **Home** button to return to the main menu of Mazda Toolbox.

In order to restore a backup that was created previously, please follow the instructions described below.

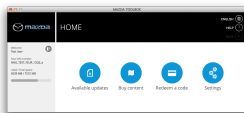
1. **Start Mazda Toolbox**, either by clicking on the “Mazda Toolbox” icon in the “Applications” folder, or by starting it from the Launchpad.
2. Once Toolbox is started, please **insert your infotainment system’s SD card** into the card reader slot of your computer. The Mazda Toolbox will recognize the SD card.



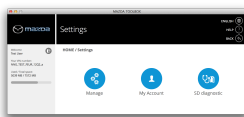
3. Once the SD card has been recognized by Mazda Toolbox, please **log in** with your existing user account, or register a new user account.



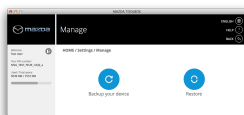
4. On the Home screen, please click on the **Settings** button.



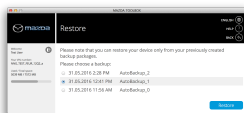
5. In the Settings menu, please click on the **Manage** button.



6. In the Manage menu, click on the **Restore** button.

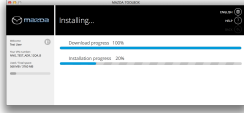


7. Choose a backup from the list, and click on **Restore**. Note that you can restore your device only if you have previously created a backup.



8. Please wait until the download and install process is finished. This can take several

minutes.



9. When the restore process is finished, click on **Home** to return to the main menu.